

FINNY FACTS

Archived version

APRIL 2014

San Diego Fly Fishers
Cleaner Water. Brighter Streams. Better Fishing.

Volume 19, No. 4

Monthly Meeting

Fly Fishing the Trinity River with Andrew Harris

Our April speaker is **Andrew Harris**, from Confluence Outfitters in Northern Ca. Andrew guides in the Plumas National Forrest, southern Oregon, Trinity River, Lower Sac, Burney Falls, and Eagle Canyon, among others. Andrew began his guiding career at Clearwater House on Hat Creek in 1997, guiding clients on the rivers surrounding Mt. Shasta and Mt. Lassen. He has also guided extensively on the Feather and Yuba Rivers. Andrew has fly fished in the Bahamas, Belize, Costa Rica, Mexico, Venezuela, New Zealand, Chile and Tasmania. Andrew is the author of "Plumas National Forest Trout Fishing Guide" and is a frequent contributor to *California Fly Fisher* magazine. Andrew lives in Red Bluff, California.

Back Country Angler

Presentation by Tom Smith at the Pasadena Fly Fishing Show
February 21, 2009

Notes by Lucky Ketcham, SDFP

Tom Smith has operated a guide service and lodging facility in Dillon, Montana for 25 years. The location is in South Western Montana near many famous fly fishing waters.

Morning Dun Mayflies, PMD's. Tom reports the PMD hatch is good until dark. He states that most guides are using fluorocarbon leaders or tippetts for better presentations to the fish.

The Beaverhead River is the closest and easiest to fish from his lodge.

August is a good time to book a trip, the summer crowds are down and it is time for the Trico hatches on the rivers. The Beaverhead also has a good Cranefly Hatch in mid August to early September. The Cranefly is a big dry fly pattern that can swim or bounce across the surface. The fish like to chase craneflies. It can be exciting. August and September are also the time for grasshoppers, especially in the lower sections of the river.

The Beaverhead River is a tailwater. The Big Hole River is 30 miles away. Ruby River is a small tailwater. The Madison River is a famous trout destination and is 60 miles away.

The Beaverhead River is a good tail water river below a dam built in the 1960's. Brown trout are the main target but there are some great rainbows below the dam. The prime fishing area is from the dam down to town. The season runs from April to October. The water flows will go up and down depending on the need for irrigation down stream. The water flows will be about 600 to 800 cfs in summer. Early in April the fishing techniques will be midging and small Blue Wing Olives. There will be a good Mother's Day Caddis hatch at the end of April.

Dillon, Montana is a high desert town about 5,100 to 5,200 feet in elevation. There is little snow in Dillon. The Big Hole is at a higher elevation and will get snow early. The Big Hole has a lot of scuds in the river and that means the fish are fat.

The end of June begins the hatch for Yellow Sally Stoneflies and Pale

Tom will use a boat to move around and get to locations; but he likes to get out of the boat and sight fish for big trout.

continued on page 6

MEETING NOTICE
 Monday, April 7, 2014
 7:30 PM
 Sequoia Elementary School
 4690 Limerick Avenue
 (See map on back page)

REMINDER
 Volunteer hosts
 for this meeting
 (report at 6:15 PM)
**Frank Beaty and
 Jim Litchfield**
Thank You from Lew Walsh

"No angler watches nature in a passive way. He enters into its very existence."

John Bailey

All fishing trips are special. But the Club's annual Bishop trip this year was really, really special, thanks to **Mother Nature**. After an entire Winter of no Winter whatsoever, it finally showed up. The two dozen of us who drove up the Owens Valley surrounded by mostly brown mountains, got to watch them turn near totally white over four gorgeous winter days. Lots of weather, but surprisingly, and thankfully, very little wind.

Even though Mother Nature was the star attraction, the fishing was good too. We caught fish, lots of fish, whether we floated the Middle Owens, waded the wild trout section, or waded the "power house" section; often in the rain or slushy snow, we had success. I expected to catch fish. What I didn't expect was at 79, my first snowmobile ride!

By Sunday, with the exception of Mammoth Mountain, as usual making its own weather, it was clear enough to go to higher country. A small group of us met **Sierra Drifters Guides** at Benton Crossing Bridge in Long Valley, snowmobiled upstream a mile or two, and hiked into the river through 8" to 10" of fresh snow. A snowmobile ride in 24 degree weather is truly an "E" ticket ride—for those of you old enough to remember "E" tickets. **Gary Farrar** and I fished together, and caught about a dozen fish between us, more than half of those the so-called **snowbows**, exceeding 20" with big ol' shoulders. Club trips like the Bishop trip, enjoying the environment and the angling; the camaraderie, and humor are what our club, and our sport is all about. And the fishing is only part of it. The cigar and whiskey sessions, and the

group dinners are also part of the fun. What's more fun after fishing, than re-visiting the successes and failures of the day's efforts, making new friends, and getting better acquainted with old friends?

In the past the Club regularly had 2-3 trips a year like Bishop, to places like Lee's Ferry, the San Juan, and the Green. We've talked at the Board meetings of trying to add at least one more Club trip a year, and new Board member **Kurt Ruble** is working on planning a second trip, perhaps to one of the aforementioned destinations; if not this year, in 2015.

Our April speaker is **Andrew Harris**, who has extensive experience guiding, and fishing the **Shasta/Lassen** area of Northeast California. Andrew's program will be **Fly Fishing the Trinity River**.

I made my first trip to what I call Shasta/Lassen in 1987: fell in love with the area and have returned many times since. And while those two great volcanoes dominate the area, the epicenter for fly fishers is the **City of Redding**. Redding, with world famous **The Fly Shop**, is almost the West Yellowstone of California, surrounded by the Upper and Lower Sacramento River, the Pit River, the McCloud River, the Fall River, Hat Creek, Manzanita Lake, Shasta Lake and much more, including the **Trinity River**, a short drive west of Redding. In other words, there's water everywhere, all within about an hour's drive, or less.

The Shasta/Lassen area can be reached three ways: it's a very long, but only a one day drive, about the same distance as Lee's Ferry; you can



fly into Redding through SF; or you can do what I do, fly affordable Southwest into Sacramento early, rent a car, drive 3-4 hours and you're fishing by early afternoon. The Sacramento plan is the best cost/time equation, and you need a car anyway.

It's nearly April, and time to start thinking about the June 2 **Fund Raiser**. **Lee McElravy**, this year's chairman, has already sent requests to the many merchants and manufacturers who have helped us in the past with gift cards, donations, discounts, etc. He will soon be contacting lodges and guide services for their help. Of course we expect another successful event with great prizes.

Art Reifman, still holds the record for the most funds raised, and Lee is determined to surpass Art's record.

How can you help, and what can you do? Buy tickets of course, early and often. You should be getting a six pack in the mail soon, and tix will be on sale at the April and May meetings. You can also help with donations. Something as small as a gift card from **Stroud's or SoCal**. Or go through your fishing gear and garb, your books, your DVD's. You may find something new or like new you never use. If it's something with a size it can go on the Silent Auction table; and if it's a gizmo it can be a Raffle prize. #





Bishop Feb. 2014

The annual Bishop fishing trip was a great success despite some sketchy weather. Twenty Three members and one guest made the trip. A few hearty soles braved the snow to fish the Upper Owens and hooked some great Snowbows.

Boss of dBay

To benefit SDRPF Boulder Creek restoration project

May 31, 2014 Tidelands Park, Coronado 5:30am – 10am
Hosted by the San Diego Fly Fishers



Suggested donation \$20 includes breakfast.
ALL, as in 100%, of your donation will be sent to the San Diego River Park Foundation
to benefit the Boulder Creek trout restoration project.
Goal is to donate \$1,000.

General release form must be signed to participate.

Registration begins @ 5:00am
Fishing time 5:30am – 10:00am
You can be 'on the water' prior to 5:30 start

Results registered by 10:30.
Breakfast: 10:00 – 11:00*
Awards: 11:00

*Breakfast is available for non-fishing spouses and friends.

Prizes for:
- Most seasoned participant
- Youngest participant
- Most fish, 1st – 3rd
- Other

Winner of Most Fish: Shirt monogrammed with ***Boss of dBay 2014*** along with
bragging rights til 2015.

Prizes include: TFO fly rod, Chest/hip packs by Simms and Fishpond, Gear bags, Otis
Redding CD's, etc.

Fly rods and artificial flies only - No scented plastics/baits/lures/worms/fish finders.
One rod in use at a time, with limit of 2 flies in water.

Event will be rescheduled due to unsafe weather conditions; please consult your club
web site for updates.

Current DFW fishing permit required and San Diego ocean craft rules apply
See - <http://www.sandiego.gov/lifeguards/safety/boatreg.shtml>

Directions: Tidelands Park, Mullinix Dr, Coronado, CA 92118
<http://www.mapquest.com/maps?name=Tidelands%20Park&address=2020%20Mullinix%20Dr&city=Coronado&state=CA&zipcode=92118>

Remember This Date

June 2, 2014

San Diego Fly Fishers Annual Raffle and Silent Auction

The Place

Southwestern Yacht Club



2702 Qualtrough St,
San Diego, CA 92106



Chairperson: Lee McElravy
Contact Lee if you wish to
donate items to the raffle or
Auction

- More details to follow.

Back Country Angler

continued from page 1

There are some public access fishing areas but the prime waters are on private ranches. To access the good waters you need a good guide and a boat. There are many nice brown trout on this river. It is actually hard to catch a small fish because the big guys eat them. He recommends pulling streamers next to and below undercut banks. Sometimes it is hard to get big brown trout out of all those roots. I think he said the average size was 16 to 17 inches.

The Big Hole River gets bigger trout and is a special river. Some people think there is a change in the elements in the soils that produces scuds and fatter fish. The Big Hole will have a lower number of brown trout and more rainbows. The upper sections of the river will have brown trout and rainbows. Higher up in the headwaters will have brook trout, cutthroats and greyling.

The section of river near Devide and Melose is popular and gets fishing pressure, especially during the Salmon Hatch.

Mid-May there is the Mother's Day Caddis Hatch. About this time the snow starts to melt and the river bumps up a little. The water will be cold and dirty until after the snow melts.

At the end of July you need a rubber raft not a wood drift boat to run the river. The water is too low for a wood boat with flows at only 200 cfs.

October is a favorite time to fish with few people on the waters.

There are some public access areas but the river is hard to wade and slippery. The Big Hole is a

very pretty river. It has some great brown trout; but not a lot of them.

The river changes during the year. Around the first or second week of June should be the Salmon Fly Hatch. There will also be large clouds of Tricos lower on the river near Twin Bridges.

In May there will be more rain storms. The runoff water is a tea color. He thinks the colored water gives the brown trout a beautiful golden brown coloration.

In July, Tom spends most of his time at the higher elevations of the Big Hole. He likes streamer patterns such as a yellow bugger with a red bead head and yellow rubber hackle legs at the front. It has a red wire ribbing.

The Madison River is 60 miles from the Lodge. It is hard to predict exact times for hatches on the rivers because they are always changing. The amount of water released for irrigation demands changes the flow and depth. One of the best locations on the Madison is the junction between the towns of Quake to Ennis. This section is almost too popular. It is really one big riffle of well oxygenated cold water. It is famous for hatches of caddis, salmonflies and grasshoppers. The rainbow trout are featured with some browns. Tom likes to drive to Ennis and fish down stream of town, below beaver holes. He uses a boat to get to the side channels to fish.

In April large rainbows move up from Ennis Lake to spawn. There will be Salmonflies hatching on the river. A series of overcast days will prolong the hatch some years. The good thing is that

even after the hatch is over, the fish will remember the Salmonfly. You can continue to use the patterns a few weeks following the hatch. In the evenings there will be big caddis fly hatches. The Madison will have some Mother's Day Caddis but not as heavy as the hatches on the Big Hole.

Reynold's Pass is higher in the river. It has good public access and is much easier to wade. You do not need a guide to fish this area with success. Tom likes to strip woolly buggers in this area.

Lake Hegedon – has good Callibaetis Mayfly hatches. Trout will chase flies on the surface. Clark Canyon Reservoir is a good trout lake, but you do not see too many rise forms on the surface. The fish get all the food they need subsurface. This a good lake to fish a midge under and indicator. The trout may run up to 16 lbs. This may be the "Best of Lake Fishing" that you can find.

The Missouri River is tail water with good fish populations. It is very popular and can get crowded.

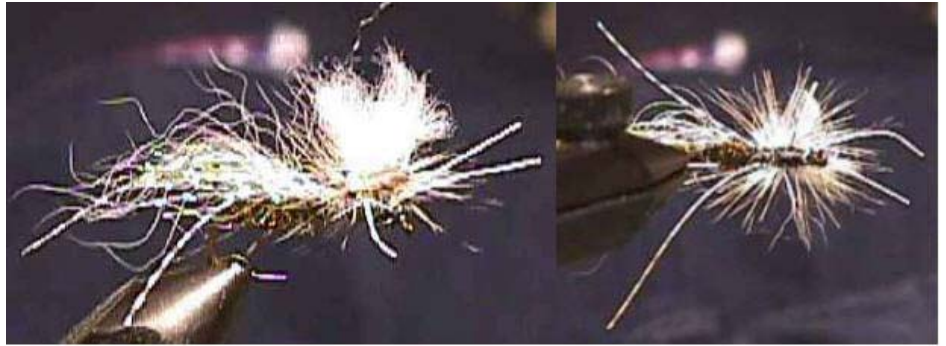
Sometimes he will take clients to a public spring creek called Poindexter Slough. It is weedy, clear and very technical. He might try to fish a little black beetle with very long light leaders. He also recommends using PMD's and Yellow Sallies.

He also has made arrangements to take clients to some ranches with private spring creeks and ponds. He notes that the Trico hatch will start in the first Saturday in August and goes into September. He says that the water can be colder in August than in June and July. The length of day and longer nights cools down the water in the mountains.



FLY OF THE MONTH

Fireman's Peacock PMX (Parachute Madam X)



Hook:	Dry fly, TMC 100 size 12 or 14
Thread:	Black 6/0 flat waxed nylon - Danville
Tail:	None on this simple version
Abdomen:	Peacock herl
Under wing:	Pearl Krystal Flash, sparse
Wing:	White calf tail
Legs:	Black and white striped small or very small centipede leg
Post:	White poly yarn or Hi-Vis poly
Thorax:	Black thread
Hackle:	Grizzly saddle or rooster neck
Head:	Black thread.

This delicate little fly was given to me by two Salt Lake City Firemen on the Green River. They were catching 25 fish per day on it fished in the seams and along the edges of the back eddies. Note the distinct body shape of an insect like a small stone fly. Peacock abdomen, thin waist, fatter thorax, a thin neck and a distinct head.

Attach thread at the mid hook, wrap to bend. Attach three peacock herl, form a herl rope and wrap to mid shank. Attach 6 strands of pearl flash as under wing. Clean out underfur and size a sparse calf tail wing. Trim butts and secure in front of flash. Tips should extend one hook gap past the bend. Secure a white poly yarn post at the $\frac{3}{4}$ to $\frac{7}{8}$ point.

Wrap a thread around the base of the post 4 or 5 times to make it firmer. Attach a saddle hackle sized for 2 to 2.5 hook gaps, convex barbs down. Wrap a thread post up the yarn and the base of the quill and back down. Let the hackle stand up while attaching two sets of legs. The rear leg should extend past the wing. Pull the front legs forward and form a distinct thread thorax. Wrap the thread to the back of the post position in preparation for the hackle. Wrap the grizzly hackle counter clockwise while holing up on the poly post. Make 3 or 4 wraps under each other, down the post. Finish close to the body. Wrap three tight turns counter clockwise around the base of the post and hackle tip. Keep it close to the body. Pull the thread forward, form a distinct thread head and whip finish. Trim the hackle tip with the tips of your scissors.

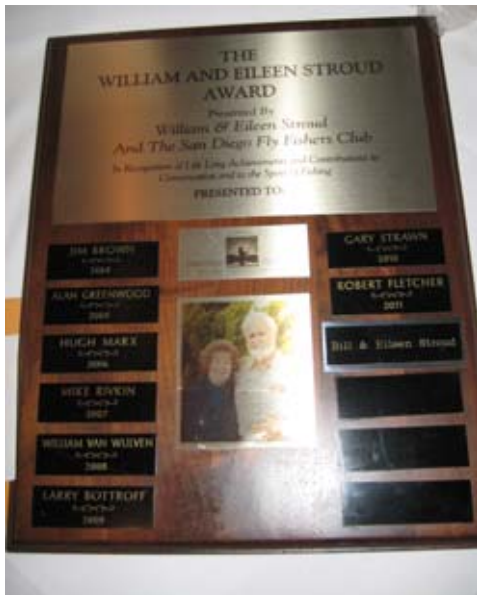
This would be a good fly for an ant, cricket or stonefly on any waters. Lucky



Lucky Ketcham



Recipients of the
Stroud Award
 2004-Jim Brown
 2005-Allen Greenwood
 2006- Hugh Marx
 2007- Mike Rivkin
 2008- Bill Van Wulven
 2009- Larry Bottroff
 2010- Gary Strawn
 2011- Bob Fletcher
 2012- Bill and Eileen Stroud



EILEEN STROUD CONSERVATION FUND



Donations are gratefully
 accepted
 Make checks payable to Eileen
 Stroud Conservation Fund

Mail to:
 Stroud Conservation Fund
 1457 Morena Blvd
 San Diego, CA 92110

All funds collected in Eileen's name will be donated to fresh water fish conservation or research programs in San Diego County.

LIFE MEMBERS

Gordon Foster (in memoriam), Bill and Eileen Stroud (in mem), Bernie Hammes (in mem), Hugh Turner (in mem), Nancy Pitts, Bob Wisner (in mem), Ken Armer, Glen Paul (in mem), Betty Coram, Ned Sewell (in mem), John Kasten (in mem), Leo Bergevin (in mem), George Beach (in mem), Bob Camp (in mem), Marvin Darling, Gene Jerzewski, Oz Osborn (in mem), Robbie Robinson (in mem), John Gauld (in mem), Lloyd Jefferies (in mem), Doug Joseph, Gary Hilbers, Tom Smith, Bud Olsen

HONORARY MEMBERS

Jim Brown, Louisa Kassler (in memoriam), Hugh Marx, Bob Fletcher, Randy Ford, Allen Greenwood, Mike Rivkin, Bill Van Wulven, Larry Bottroff, Aubrey Wendling (in memoriam), Bob Berry

Recipients of the:

GORDON FOSTER MEMORIAL AWARD

For unselfish and outstanding service
 to the flyfishing community

1991-Ned Sewell	2004-Joe Bain
1992-Bob Camp	2005-Jim Reeg
1993-Bill & Eileen Stroud	2006-John Kasten
1994-Ed Velton	2007-Lucky Ketcham
1995-Bob Wisner	2008-Louie Zimm
1996-Gary Hilbers	2009-Warren Lew
1997-Jack Bentley	2010- Paul Woolery
1998-Gordie Zimm	2011-Gary Strawn
1999-Gretchen Yearous	2012-Lee McElravy
2000-Tom Smith	2013-David Collins
2001-Rose & Roger Yamasaki	
2002-Larry Sorensen	
2003-Jim Tenuto	

Cutoff date for **May FINNY FACTS**
 articles---**Friday April 11th.**

Send articles to:
 Rose and Roger Yamasaki,

Thanks!!

**Send change of address information,
 signup for electronic version of newsletter,
 or Club membership renewal to:**

Alan Reoch

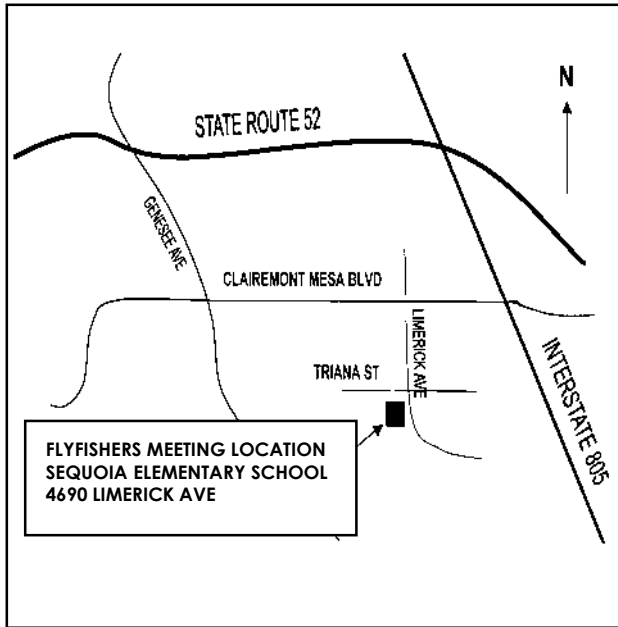


**SAN DIEGO FLY FISHERS
2014 DIRECTORS**

Jack Duncan-President
 Alan Thompson-Vice Pres.
 Bruce Harris-Treasurer
 Bruce Michael-Secretary
 Bob Blazer
 Bruce Bechard
 Don Davis
 Fred Gregory
 Jon Holland
 Lee McElravy
 Art Reifman
 Alan Reoch
 Kurt Ruble
 Gary Strawn
 Jim Tenuto
 Steve Vissers
 Lew Walsh
 Paul Woolery

**COMMITTEE
CHAIRPERSONS**

Annual Fund Raiser
 Lee McElravy
Conservation-
 Gary Strawn
FFF Southwest Council-
 Don Davis
Fly Casting Clinic-
 Lee Anderson
Fly Tying Clinic-
 Lucky Ketcham



Membership-
 Alan Reoch
Newsletter-
 Rose & Roger Yamasaki
 E-mail:
Programs-
 Jon Holland
 Bruce Bechard
Raffles-
 Lew Walsh (monthly)

Refreshments-
 Bob Blazer
Rod Building-
 Jack Duncan
Travel-
 Paul Woolery
Video & Library-
 Bill Stock
Web Page-
 David Collins
www.sandiegoflyfishers.com

Meeting Place for Workshops

San Carlos Recreation Center near Lake Murray. The address is 6445 Lake Badin Ave. To get there from Hwy. 8, take the Lake Murray Blvd. exit just like you were going to the lake. Instead of turning into Kiowa, keep going on Lake Murray Blvd. another 1.6 miles. When you come to Lake Adlon Drive, (first corner past Jackson Dr.) turn left. Go down three blocks and the recreation center will be on your right. It is on the corner of Lake Adlon and Lake Badin.



**San Diego Flyfishers
10601-G Tierrasanta Blvd. #327
San Diego, CA 92124**

**San Diego Flyfishers
10601-G Tierrasanta Blvd. #327
San Diego, CA 92124**



**San Diego
Fly Fishers**

*Official Chapter of
Federation of Fly Fishers*

SINCE 1962